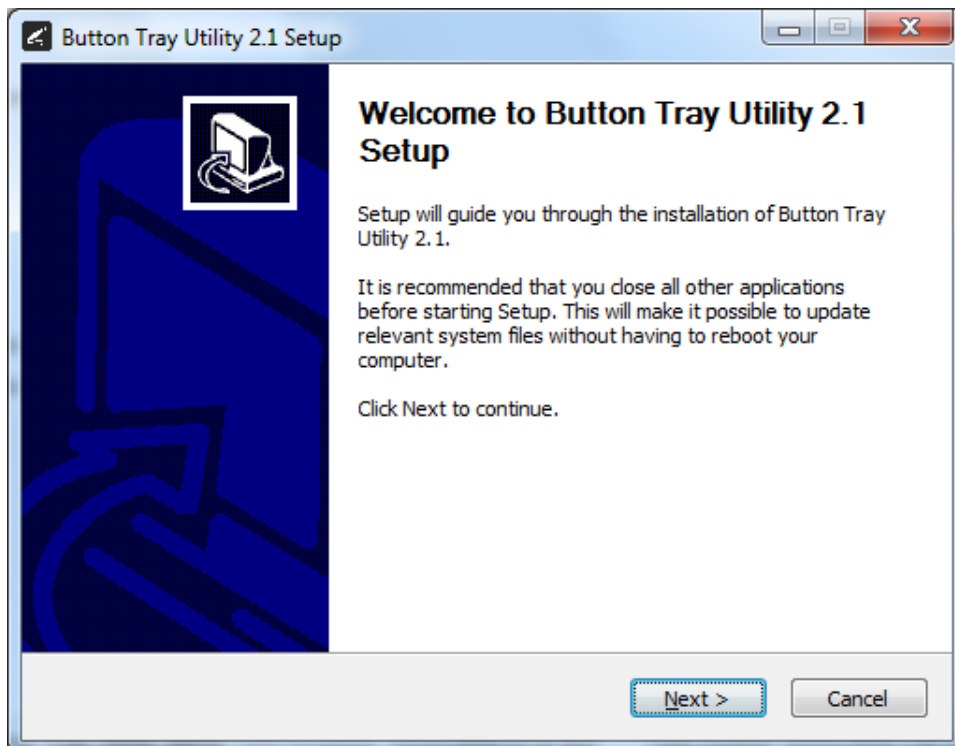
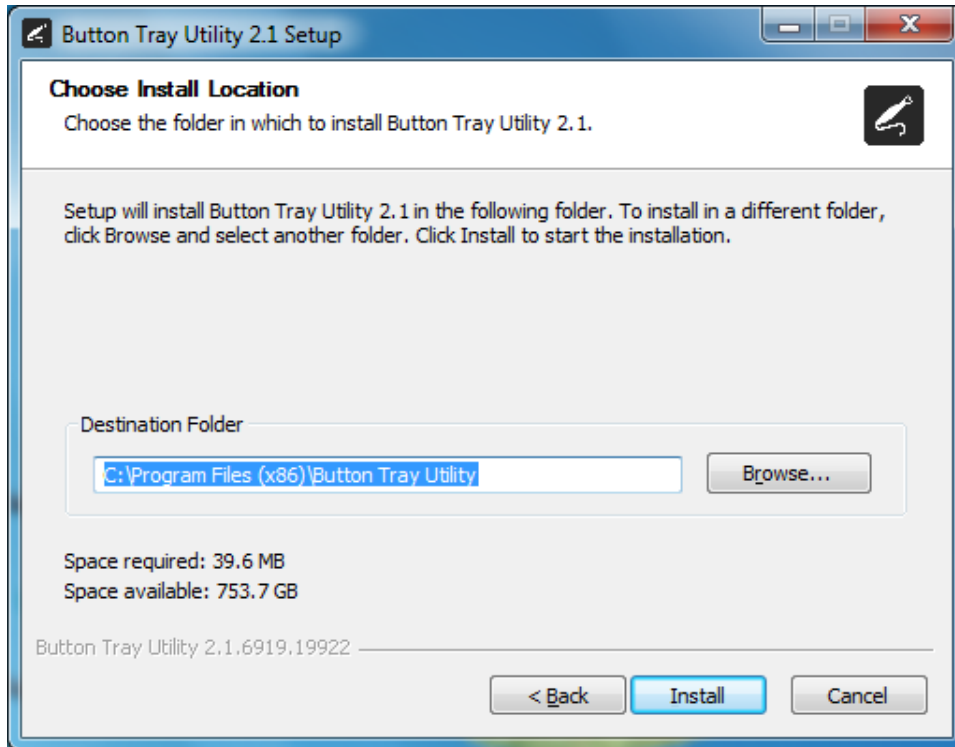


Setup Guide for Vatech EzDent-i 3.0.0.2 and higher.

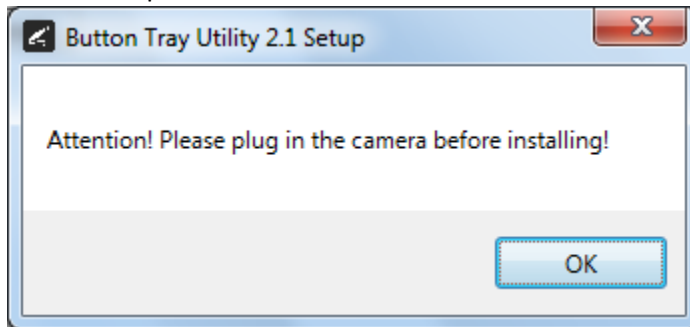
- 1) Install the REALCLOUD HD1 camera button software utility. The installer is located on the REALCLOUD HD1 flash drive in the Button Software folder. Or REALCLOUD Website <http://www.realcloudimaging.com/support/>
Scroll down the Support Page to the Downloads Section. Click the “Capture Button Software” button. This will start downloading the Button-Tray-Utility.zip , once downloaded open the zip file and Install the REALCLOUD HD1 camera button tray utility software.
- 2) Select the Next button on the Welcome screen.



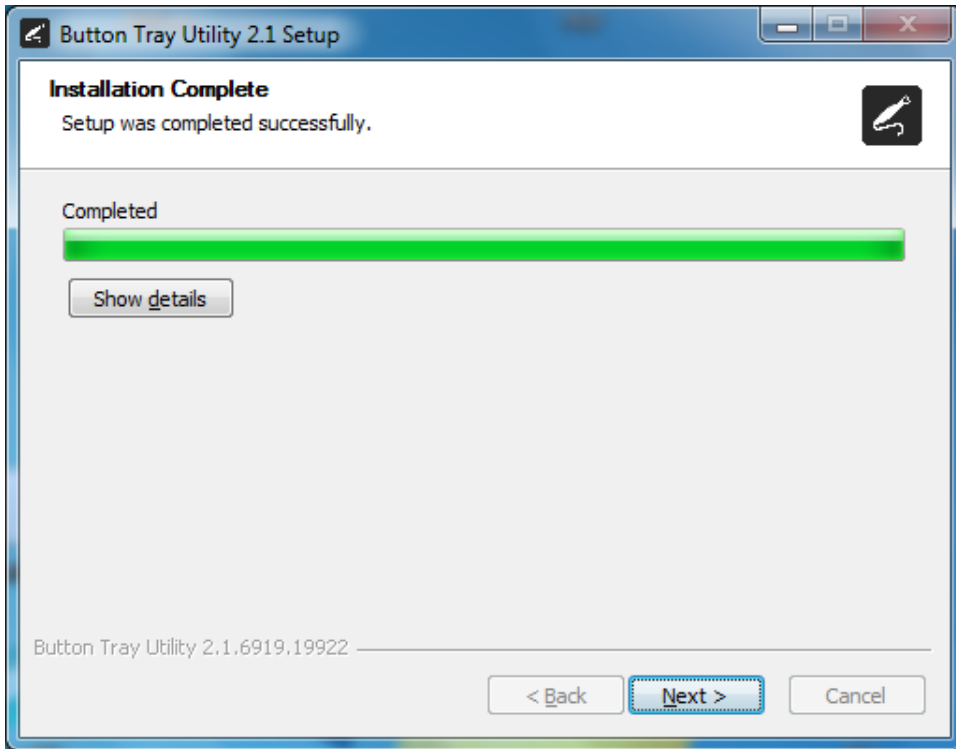
- 3) Select the install destination folder and click on the Install button.



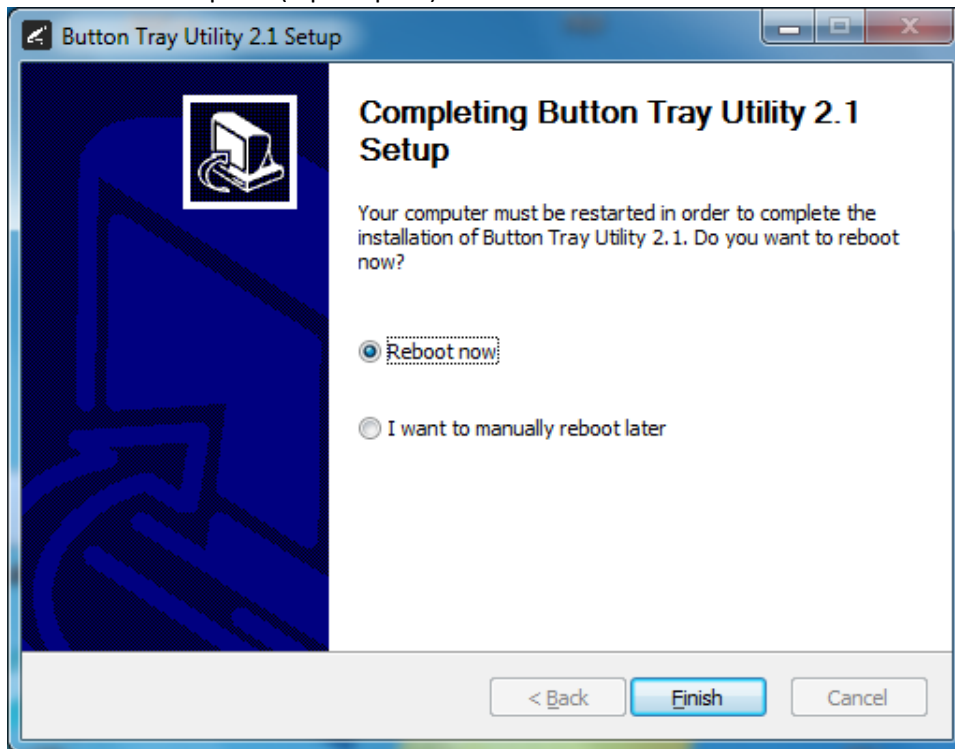
- 4) Plug the REALCLOUD HD1 camera into the computer and click on the OK button to start the installation process.



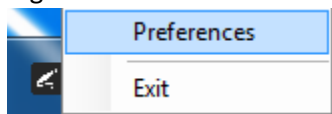
5) Click on the Next button to continue.



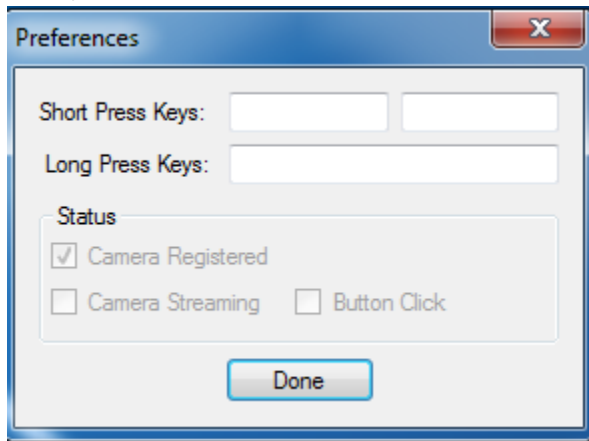
- 6) Select a reboot option (if prompted) and click on the Finish button.



- 7) Right click on the Button Tray Utility icon in your system tray and select Preferences.



- 8) Click In the first text box for Short Press Keys and press the “spacebar” key one time on your keyboard. Leave the second text box for Short Press Keys and the text box for Long Press Keys blank, click on the Done button.



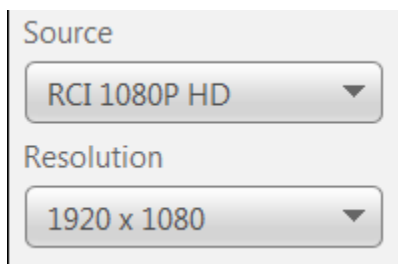
- 9) Open EzDent-i application, with a patient selected go to Acquisition tab.



- 10) Select the IO Camera button.



- 11) Select RCI 1080P HD in the Source drop down and select 1920 x 1080 in the Resolution drop down.



- 12) A short/quick camera button press, and release will save the current image from the live video window.